

CASE STUDY



Ammendale Spillway



CITY:	Beltsville, MD
COUNTY:	Prince Georges County
GENERAL CONTRACTOR:	Nardi Construction
LOCATION:	17000 Trolley Lane, Beltsville, MD 20705
RIP/RAP REPLACEMENT:	64,000 total sq/ft of Flexamat used
GRASS SEED:	soilDEFENDER Warm Season Mix
NOTES:	Designed by engineering Firm Soltez, this site used Flexamat as a sustainable rip-rap replacement on the pond spillway. It was approved by Prince Georges County Soil and Water Division. soilDEFENDER Reclamation Mix was seeded before installation per Flexamat installation guidelines. Lime and fertilizer quantities were determined by soil testing. Flexamat Plus was used with the added benefit of a TRM and Curlex wood fiber erosion control blanket underneath. The project started in July 2020 and had heavy rain several times through the end of summer with no performance issues. The project was finished in October 2020. This large scale job used FLEXAMAT for ease of install, value engineered to save money. The FLEXAMAT sustainability aspects also played a role in specification, using less material and trucking mileage that traditional rip-rap design.

INSTALL:



ENVIRONMENTAL CONSTRUCTION SOLUTIONS
A W.S.CONNELLY COMPANY

www.ecsproductsva.com

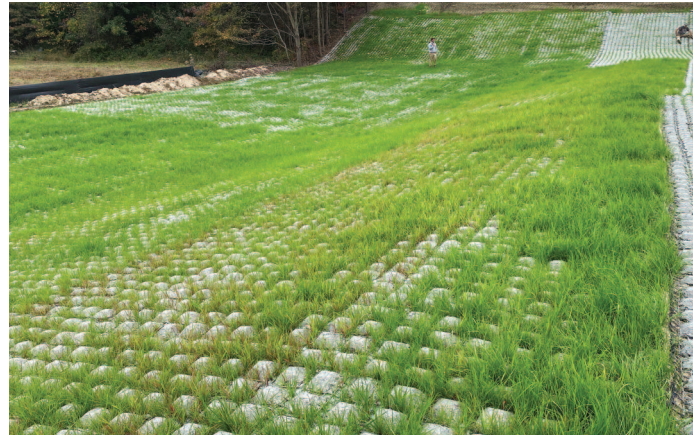
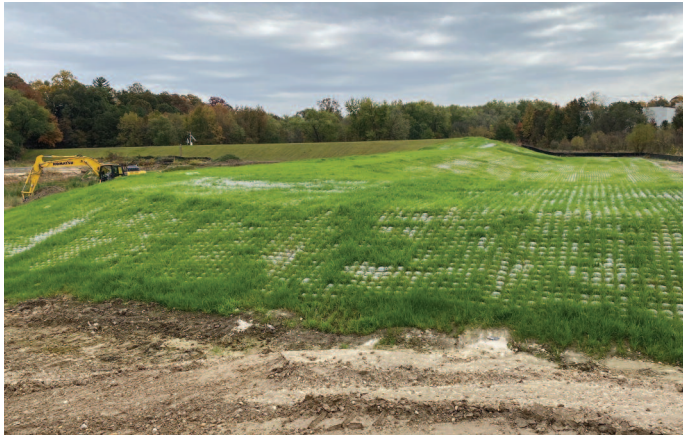
ROANOKE • CHARLOTTESVILLE • RICHMOND • VIRGINIA BEACH • CHANTILLY • UPPER MARLBORO, MD

CASE STUDY



Ammendale Spillway

THREE WEEKS AFTER INSTALL:



ONE YEAR AFTER INSTALLATION:



ENVIRONMENTAL CONSTRUCTION SOLUTIONS
A W.S.CONNELLY COMPANY

www.ecsproductsva.com

ROANOKE • CHARLOTTESVILLE • RICHMOND • VIRGINIA BEACH • CHANTILLY • UPPER MARLBORO, MD