

CASE STUDY

High Performance Erosion Control



Historic Calfee Field



Before Installation - 6/5/18



After Installation - 8/14/18

CITY:	Pulaski, VA
DESCRIPTION/NAME:	Calfee Field – Home of the Pulaski Yankees
GENERAL CONTRACTOR:	Shelor Corp. – Calfee Field
LOCATION:	700 S. Washington Ave., Pulaski, VA 24301
EC-3 REPLACEMENT:	Flexterra. 60 bales per acre
GRASS SEED:	soilDEFENDER Cool: 200 lbs. for one acre Crownvetch: 20 lbs. for one acre
OTHER AMENDMENTS USED:	Sol-u-cal: 10 bags per acre 10-20-10 organics: 5 bags per acre Hydro-Blast: 2.5 gallons per acre
NOTES:	The Shelor group, who owns the ballpark and the baseball team Pulaski Yankees, purchased these erosion control materials to fix the side of the hill that comes on the third base line. They are going to add more stands in the future on that side but needed to establish vegetation before they did more construction. This site was a one acre site which due to the steep slopes needed 60 bales of Flexterra . The Flexterra along with the soilDEFENDER grass seed gave the Shelor group what they needed. Vegetation and slope stabilization as they continue to add new modern amenities to this gem of a ballfield that is on the National Register of Historic Places. Calfee Park built in 1935 as part of the Works Progress Administration (WPA) project.

INSTALL DAY:



6/5/18



6/5/18



6/5/18



ENVIRONMENTAL
CONSTRUCTION SOLUTIONS

www.ecsproductsva.com

ROANOKE • CHARLOTTESVILLE • RICHMOND • VIRGINIA BEACH • CHANTILLY • UPPER MARLBORO, MD

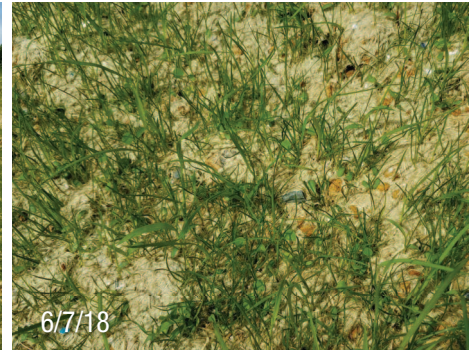
CASE STUDY

High Performance Erosion Control



Historic Calfee Field

TWO DAYS AFTER INSTALL:



ONE MONTH AFTER INSTALL:



TWO MONTHS AFTER INSTALL:



www.ecsproductsva.com

ROANOKE • CHARLOTTESVILLE • RICHMOND • VIRGINIA BEACH • CHANTILLY • UPPER MARLBORO, MD